

**Code of practice for installation, operation and maintenance of
electric passenger and goods lifts**

AMENDMENT NO. 3

September 2017

1. Page 48, 13.2.1.6 (c)

Replace with the following text:

- c) The arrangements shall be such that turning the fire lift switch(es) "ON" shall change the lift from collective to non-collective control so as to avoid the possibility that a fire-fighter, after operating the fire lift switch, may lose control of the lift through the continued operation of the collective control. If both the fire lift switches are turned back to "OFF" position, the lift shall:

- complete the answering of the registered call;
- wait for the doors to open fully by continuous pressure of the "Door Open" button; and
- remain inoperative for approximately 30 s after doors fully opened;

before automatically reverting to the mode of operation under which it was running prior to the activation of the fire lift switch(es). This feature is to enable the fire lift to be reset and allow for its recall without the fire fighter losing control of the lift while the fire fighter is still travelling to the destination.

2. Page 49, 13.2.2 (g) (ii)

Replace with the following text:

- (ii) To enable the fire fighter to change his registered call, the original call will be cancelled once a new call is registered. This is possible only when the position of the lift car is not within the deceleration distance of the new call.

If the new call is registered in the forward direction, the lift shall continue to travel to the new call destination without stopping. However, if the lift car is within the decelerating distance of the original call, the lift shall stop at the nearest landing without opening the doors and continue to travel to the new called destination.

If the new call is registered in the reverse direction, the lift shall stop at the nearest landing without opening the doors and reverse its direction to travel to the new called destination.

When the lift reaches the registered floor, it shall wait with doors fully closed. Power-operated doors shall be opened only by continuous pressure on the "Door Open" button. If the button is released prior to the doors reaching the fully opened position, the doors shall automatically reclose.

3. Page 50, Figure 3

Replace with the following figure:

Singapore Standard SS 550 : 2009
Amendment No. 3

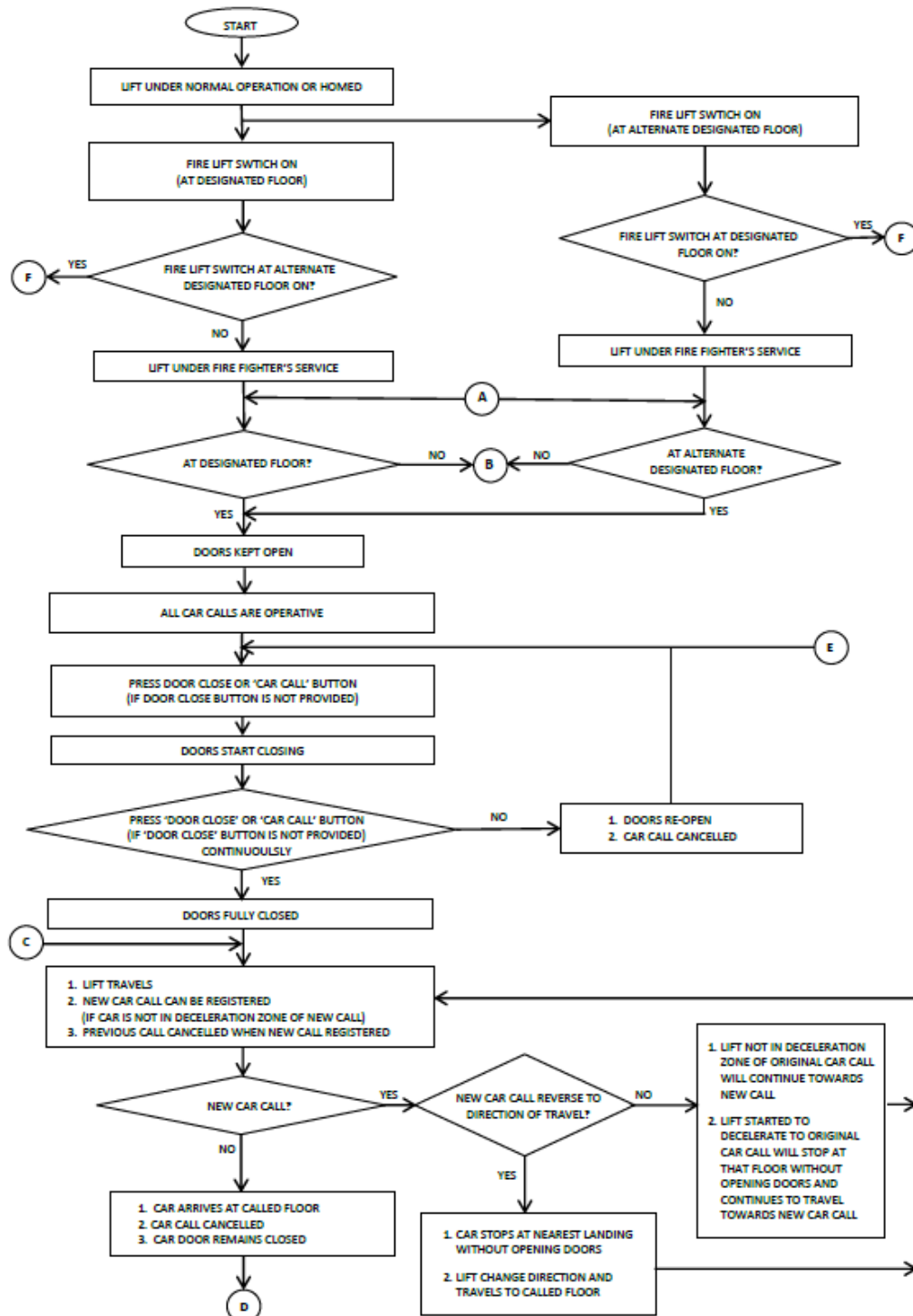


Figure 3 – Fire fighter's service operation flowchart A

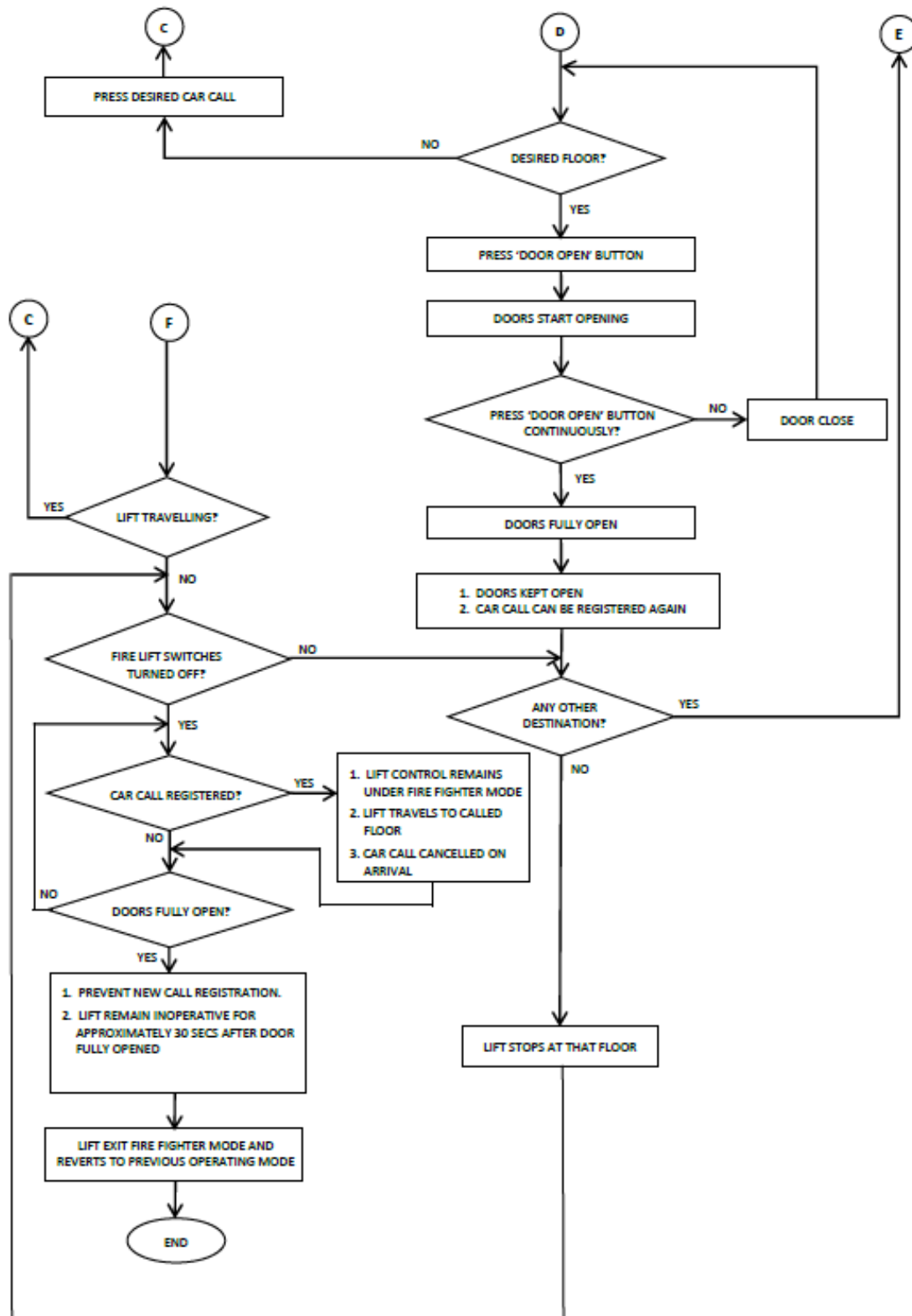


Figure 3 – Fire fighter's service operation flowchart A (continued)