

**SPECIFICATION FOR
FLUID POWER SYSTEMS AND COMPONENTS - GRAPHIC SYMBOLS
AND CIRCUIT DIAGRAMS - GRAPHIC SYMBOLS**

AMENDMENT NO. 1

November 1996

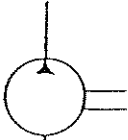

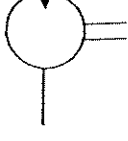
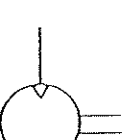
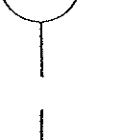
1. Page 4, Subclause 5.3.3.1

Delete the existing content under the section 'Application or use of the equipment or explanation of the symbol' and *insert* the following:

'Energy conversion units with limited angle of rotation (pump, compression, motor, rotary actuator)'.

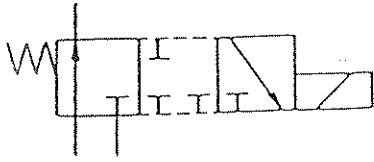
2. Page 14, Subclause 8.1.2

Insert the symbol for 'Hydraulic motor' into the clause as follows:

Reference	Description	Application or use of the equipment or explanation of the symbol	Symbol
8.1.2	Energy conversion units	General symbol	
8.1.2.1	Hydraulic pump		
8.1.2.2	Hydraulic motor		
8.1.2.3	Pneumatic motor		
8.1.2.4	Air compressor		

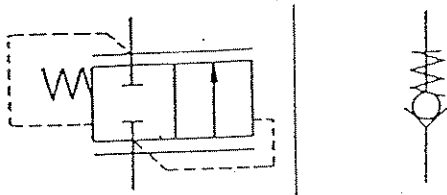
3. **Page 21, Subclause 9.2.3.2**

Delete the symbol and substitute with the following:



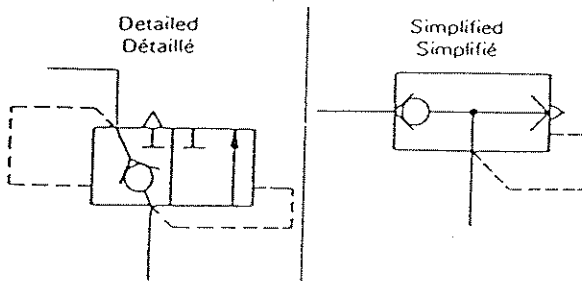
4. **Page 24, Subclause 9.3.2.1.2**

Delete the symbol and substitute with the following:



5. **Page 24, Subclause 9.3.2.5**

Delete the symbol and substitute with the following:



6. **Page 35, Clause A.2.11**

Delete the symbol and substitute with the following:

