

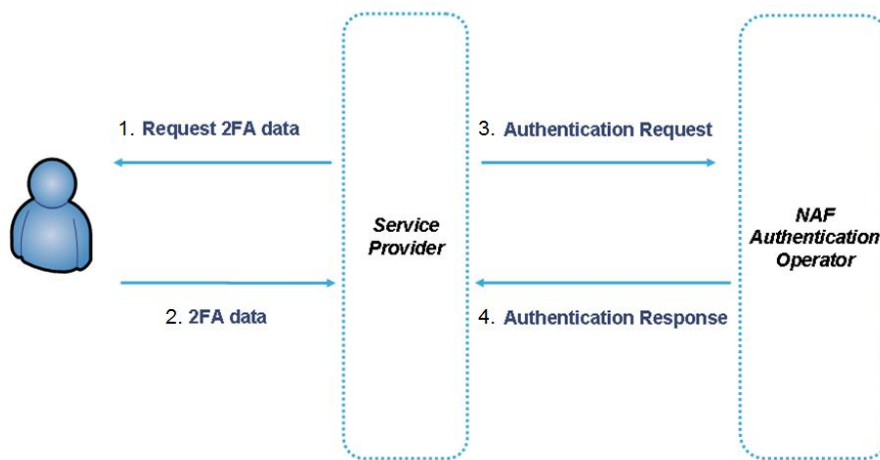
**Technical Reference for National authentication framework
– Authentication operator interface messages**

AMENDMENT NO. 2

March 2013

1. Page 8, Figure 2

Replace Figure 2 with the following diagram:



2. Page 41, B.1.1

Delete the first diagram which has a lower resolution.

3. Page 43, B.1.2

Delete the first diagram which has a lower resolution.

4. Page 64, C.6 E2EE flag

Replace "hashing" with "encrypting" and "D.1.3" with "D.3".

5. Page 65, C.10 User identifier flag

Insert additional Flag 4 as follows:

Type	Flag
SP provided UIN	4

6. Page 66, C12 Field length

Replace the user identifier (UIN) as follows:

Field name	Field type	Field length
User identifier (UIN)	String	SHALL be <=20 characters in length

7. Page 67, C13 Status code

Insert additional optional error code after Code 1040.

Status code	Status message
1100	2FA data suspected out of sync